

Quality Products for Life Saviours.

## *Mercury Healthcare*

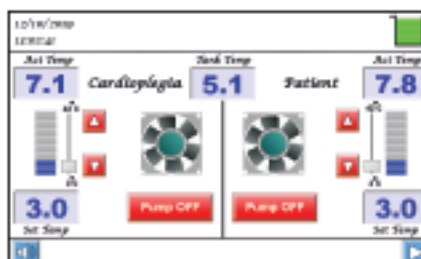
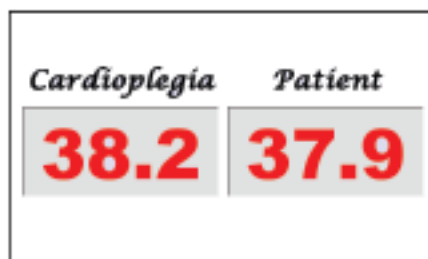
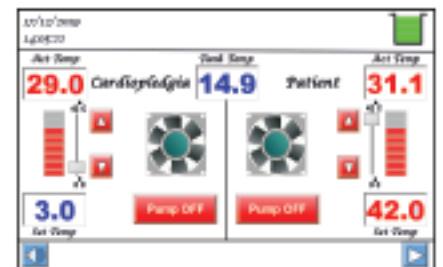
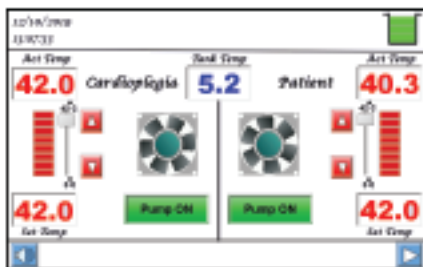
---

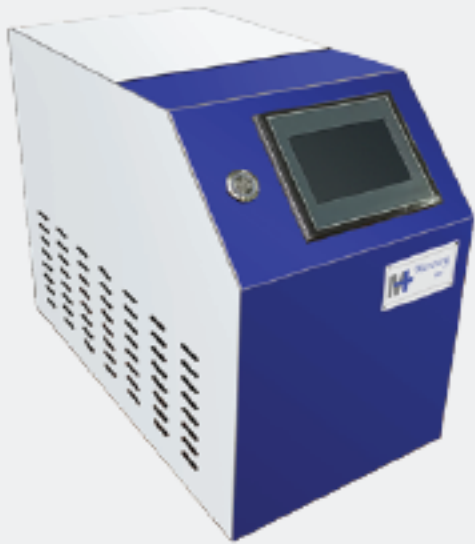


## Hyper-Hypothermia Unit

- Fully touch screen control.
- Faster cooling and heating in it's class.
- Auto cleaning mode for descaling & disinfecting.
- Introducing first-ever diagnostic mode of its kind.
- Introducing first-ever manual mode for emergency use.
- Reconfigurable according to users.
- Robust design to avoid periodic repairs and services.
- Independent cooling and heating for both patient and cardioplegiad circuits.
- Easy to use graphical users interface.
- Silent operation compare to other similar equipment.
- Robust & Reliable PLC based electronics.

## Graphical User Interface





## Mini

- Touch screen control.
- 5 ltr water capacity.
- Two output circuits.
- Open tank.
- Temp range 35°C to 42°C.
- Flow rate > 10 lit/min.
- PLC based electronics.

## Magma

- Touch screen control.
- Open tank.
- 5 Ltr water capacity.
- Single output circuit.
- Temp range 42°C to 55°C.
- Flow rate > 5 lit/min.
- PLC based electronics.



## Slush

- Minimize the risk of trauma to delicate tissues and organs.
- Slush basin with auto-stir.
- Silent operation.
- Save valuable nursing time.
- Open tanks.
- Easy to operate and maintain.

Best In It's Class

Graphical User Interface

Touch Screen

Auto Cleaning &  
Descaling Mode

In-built Diagnostic

**Solution**

Auto-Cleaning &  
Descaling Mode

Graphical User Interface

Emergency  
Manual Mode

Touch Screen

Best In It's Class

Independent  
Heating & Cooling

Emergency  
Manual Mode

**Hyper-Hypothermia Unit**

**Mini**

**Magma**

**Slush**

**Magma**

**Mini**

**Quality Products.... You Can Rely On**

Scan QR Code



**Mercury**  
Healthcare

+91 - 9825025940  
www.mercuryhc.com  
info@mercuryhc.com  
44, Siddhi Industrial Park,  
Opp Waghodia GIDC,  
Waghodia - 391 760,  
Vadodara, Gujarat, India

**CE**  
3508

ISO 9001:2015